

LTF 535

As a synonym for security, the LTF and LTFE range ensure reliable low temperature freezing and high temperature uniformity. Digital display, alarms, contact for remote alarm and castors are some of the standard features.



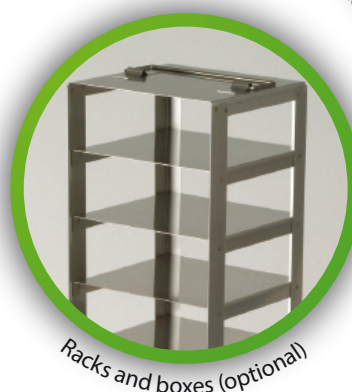
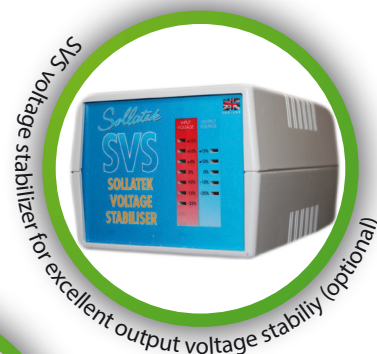
LTF SERIES

- Single compressor
- Low energy consumption
- Low noise level
- 100% HCFC/CFC free
- Key lock
- Baskets

ALL STANDARD FEATURES

- Digital display
- Visual and acoustic alarm
- Adjustable high/low temperature alarm
- Contact for remote alarm
- Probe failure alarm

- 60 °C



Single compressor



Low energy consumption



Low noise level



High temperature uniformity



MODEL	LTF 535
Item code	DAI 0121
Dimensions exterior WxDxH (mm)	1662x758x890
Capacity (L)	476
Temperature range (°C)	-60 / -30
Power supply (V)	230
Frequency (Hz)	50/60

ARCTIKO
The art of simplicity®

Technical specifications

Item code	DAI 0121
Dimensions exterior WxDxH (mm)	1662x758x890
Capacity (L)	476
Dimensions interior WxDxH (mm)	1500x500x675
Insulation (mm)	80
Temperature range (°C)	- 60 / - 30
Max. ambient temperature (°C)	25
Power supply (V)	230
Frequency (Hz)	50/60
Power consumption (KWH/24H)	7,2
Current (A)	4
Weight (KG)	107
Shipping weight (KG)	131
Shipping weight with wooden packaging (KG)	-
Shipping dimensions WxDxH (mm)	1720x800x1500
Shipping dimensions with wooden packaging WxDxH (mm)	-
No. of compressors	1
Visual / acoustic alarm	Yes
Power failure alarm	No
Adjustable high/low temperature alarm	Yes
Open door alarm	No
Probe failure alarm	Yes
Alarm display as text - not codes	No
Contact for remote alarm	Yes
Prepared for GSM alarm module	Yes
Approx. hrs of battery back up for alarms and temperature display in the event of power cut	No
Porthole for installation of PT100/CO ₂ back up	Yes
Digital display	Yes
Data logger	No
RS 232 interface	No
RS 485 interface	No
USB up/down load	No
Defrost	Manual
Castors	No
Chart recorder	Optional
Shelves (pcs)	No
Baskets (pcs)	3
Sub lids / doors (pcs)	No
Lighting	No
Lock	Yes
Inner liner material	Varnished steel
Cabinet material	Varnished steel
Colour (exterior)	White
Refrigerant	HC

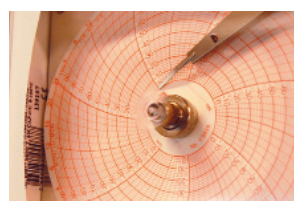
Optional



1 The GSM alarm module sends a SMS message to one or several coded telephone numbers in case the temperature exceeds a fixed range.



2 SVS voltage stabilizers for excellent output voltage stability in case the voltage rises or drops.



3 Chart recorder for documentation of the temperature condition over a certain period of time.



www.arctiko.com
www.co2care.eu